

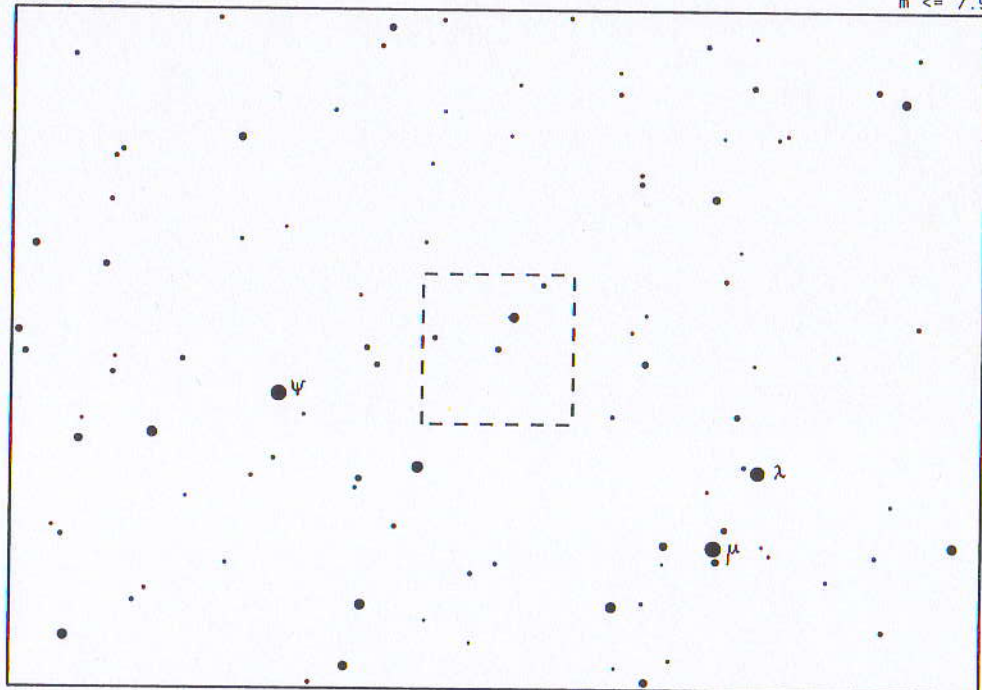
10 42 24 45 49 46 (1950.0)
10 45 20 45 33 58 (2000.0)

TX UMa

Max: 7.06 MinI: 8.76 MinII: 7.13 Typ: EA/SD
D = 9.4h d = 0 h Phase: Per.: 3.063238d

19°x13°

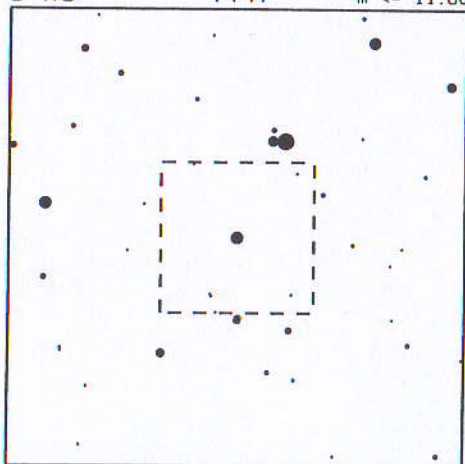
m <= 7.9



3°x3°

PPM

m <= 11.80



60'x60'

GSC

m <= 15.23

